

An aerial photograph of a large, modern industrial or commercial building complex. The main building is a large, multi-story structure with a curved, U-shaped design, featuring a blue and white facade. It has two helipads on its roof. To the right of the main building is a smaller, rectangular building with a blue roof. The complex is surrounded by lush green trees and a winding river. In the background, there are more buildings and a forested area. The Unilumin logo is visible on the side of the main building and in the top right corner of the image.

Unilumin

# Company Profile

— Unilumin Group Co., Ltd —



# Redefine the Light Culture with Technology and Design

LED Display · LED Lighting



## **Vision**

Become a Global Display & Lighting Solution Leader

## **Mission**

Together, for a Brighter Future

## **Value**

Altruism, Integrity, Innovation, Enterprise



# Contents

---

01

Company Overview

02

Main Business

03

Customer Values





PART

01

# Company Overview

# 1-1 Company Introduction



# Unilumin



Founded in

2004 300232 (Shenzhen Exchange)



**400,000 m<sup>2</sup>** Industrial Park (largest LED display manufacturing base in the world)



**714,000 +** m<sup>2</sup>/year Production Capacity

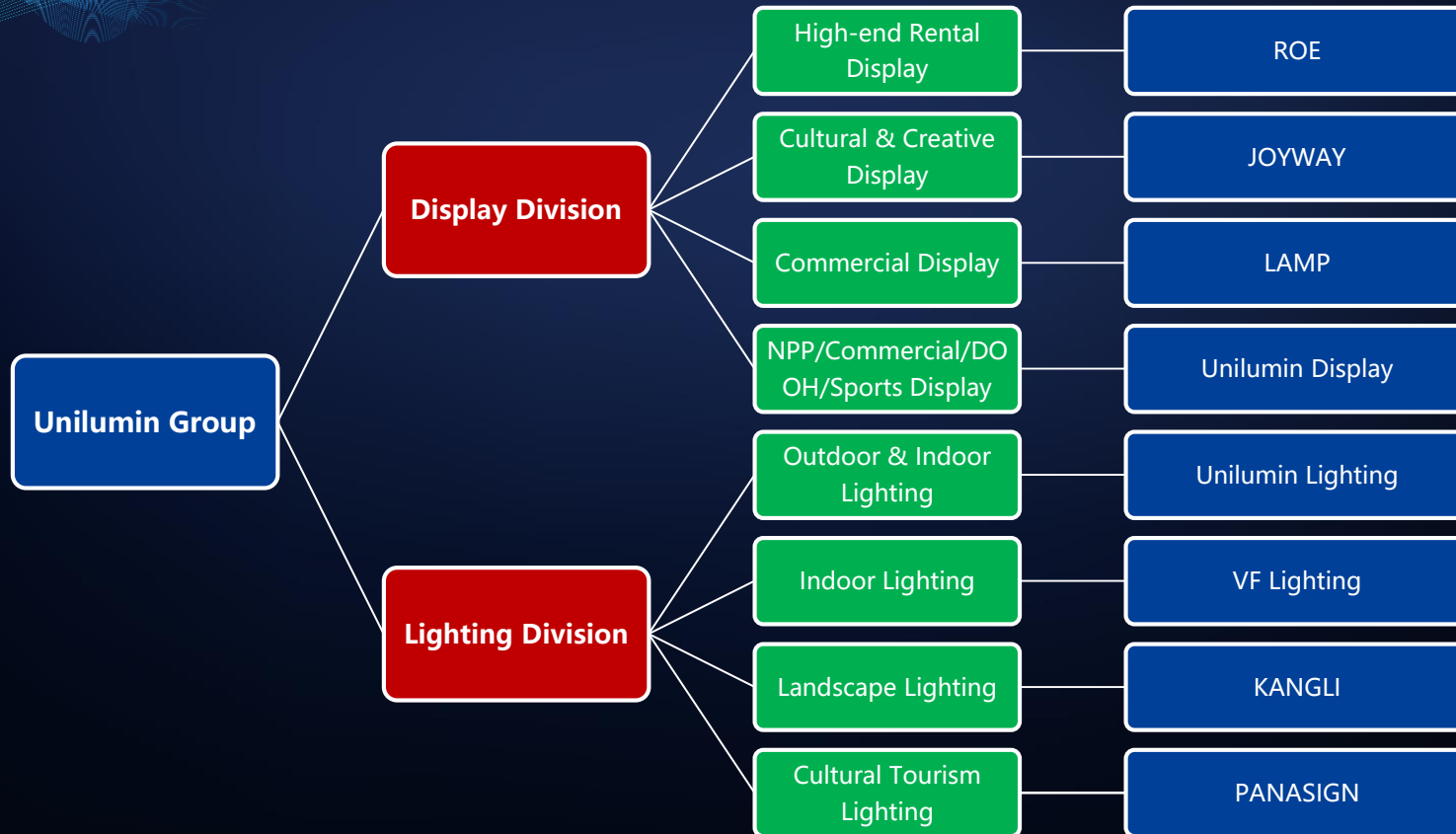


1,401 Patents



5,000+

Employees Globally





## 1-3 Financial Performance

**Unilumin**

Sales Revenue  
(Unit: Million Dollar)



PART

02

# Main Business

The global LED display market is estimated to shrink in 2020 and 2021. There will be explosive growth starting in 2022, and a CAGR of **20.4%** is expected from 2020 to 2025.

### Global LED Display Market Volume



Sources: LEDinside, HCR



The global LED lighting market is expected to achieve a CAGR of 12.1% from 2020 to 2025, and the market size in 2025 will be close to 100 billion USD.

### Global LED Lighting Market Volume

Unit: Billion USD



Sources: Tianfeng securities, GII

## 2 Business Groups / 7 Business Segments



The professional display solutions market has broad room for growth, and the market size in 2024 will be **2.5 times** the current size.

### Professional Display Solutions Market Volume

Unit: Million USD



Sources: LEDinside, HCR



## 2-1 Professional Display Solutions

**Unilumin**



Offering visual technologies to the mission-critical applications, Unilumin Professional LED solutions portfolio not only offers video walls (from pixel pitch 0.5mm to 1.5mm) but also software and cloud management systems to bring together all necessary content from a large number of different sources into one system while ensuring optimum security. Our solutions span the complete landscape, including public security, emergency control and command centers, smart city management centers, broadcast and conference rooms.



### Upanel1.9 & Upanel2.5, 170sqm, Sky TV Sport Studio

Broadcasting set design plays a key role in capturing viewers' attention. Sky TV Sport Studio installed a total number of 170sqm of Upanel which operates at its lowest brightness mode while maintaining the highest image quality. The Program Director commented, "The Unilumin Upanel LED wall opens up a world of creative possibilities for shows and events that will use the Sky studio venue from this point forward. In the sports entertainment industry, producers and production designers are beginning to use our Unilumin LED walls to increase the quality of their storytelling and to augment the "physical" scenery that is traditionally used. This new LED wall places Sky Italia at the forefront of the new virtual scenery trend with outstanding clarity." 3

## 2-1 Professional Display Solutions

**Unilumin**



Mexico City International Airport



City Security Command Center Wuxi China



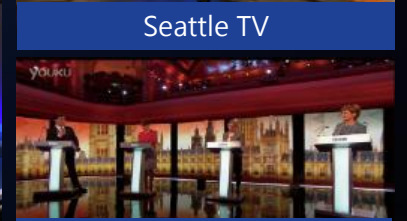
Sky TV Abu Dhabi



Russia 1st TV



Seattle TV



British Election



## 2-1 Professional Display Solutions

**Unilumin**



Comcast Reception



VOLKSWAGEN Show Room



GDP Architects Conference Hall, Malaysia



Aviva Auditorium, London



IVA Conference Center, Stockholm

The commercial display solutions market grows with CAGR 12.7% from 2020 to 2024 in estimate, and the market size will reach 3.20 billion USD in 2024

### Commercial Display Solutions Market Volume



Sources: LEDinside, HCR

## 2-2 Commercial Display Solutions

**Unilumin**

Unilumin indoor and outdoor commercial display solutions offer integration of project planning, control systems, product design, and construction to provide a comprehensive one-stop customized visual solution for high-end chain stores, urban complexes, outdoor advertising, architectural decoration, etc., The excellent work of Unilumin in this particular field has been receiving trust and respect of Fortune 500 including Huawei, Volkswagen and Nike.





## 2-2 Commercial Display Solutions

Unilumin



Yuehui Shopping Mall (China) uses over 2,400 SQM LED Displays

## 2-2 Commercial Display Solutions

**Unilumin**



Hyundai Motor Showroom



Kuala Lumpur International Airport



NIKE Innovation House



Samsung Store



Royal Caribbean Ocean Spectrum



LinQ Casino



## 2-2 Commercial Display Solutions

**Unilumin**



Centro WEHBE La Salle



Chengdu Twin Towers



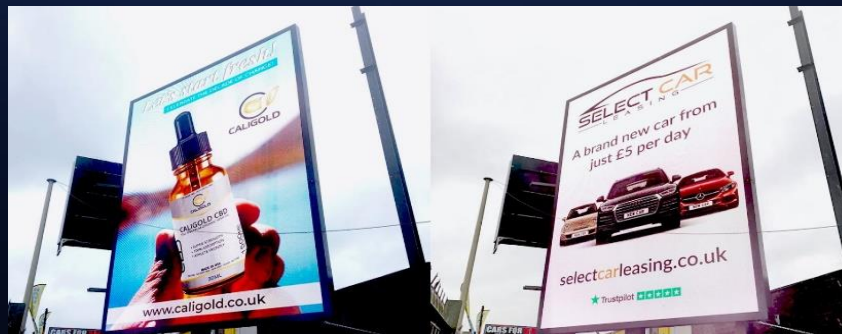
Maoye Building



Rostov Central Shopping Mall



Mercedes-Benz Arena



Mega Digital Billboard



Mexico Business Center



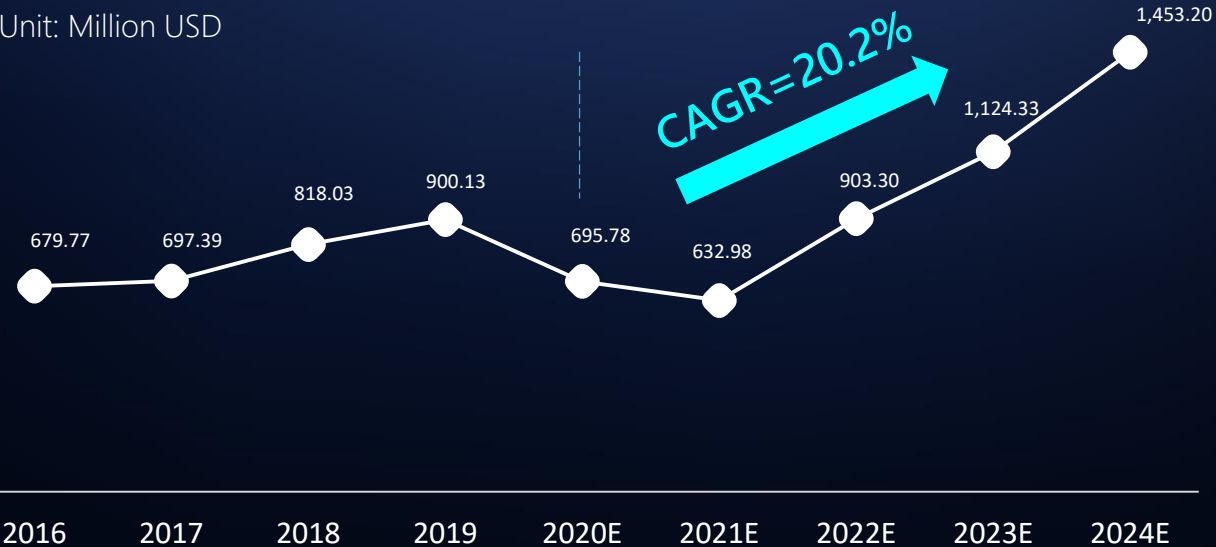
## 2-3 Rental and Staging Display Solutions

**Unilumin**

The rental and staging display solutions market has broad room for growth, and the market size in 2024 will be **2 times** the current size

### Rental and Staging Display Solutions Market Volume

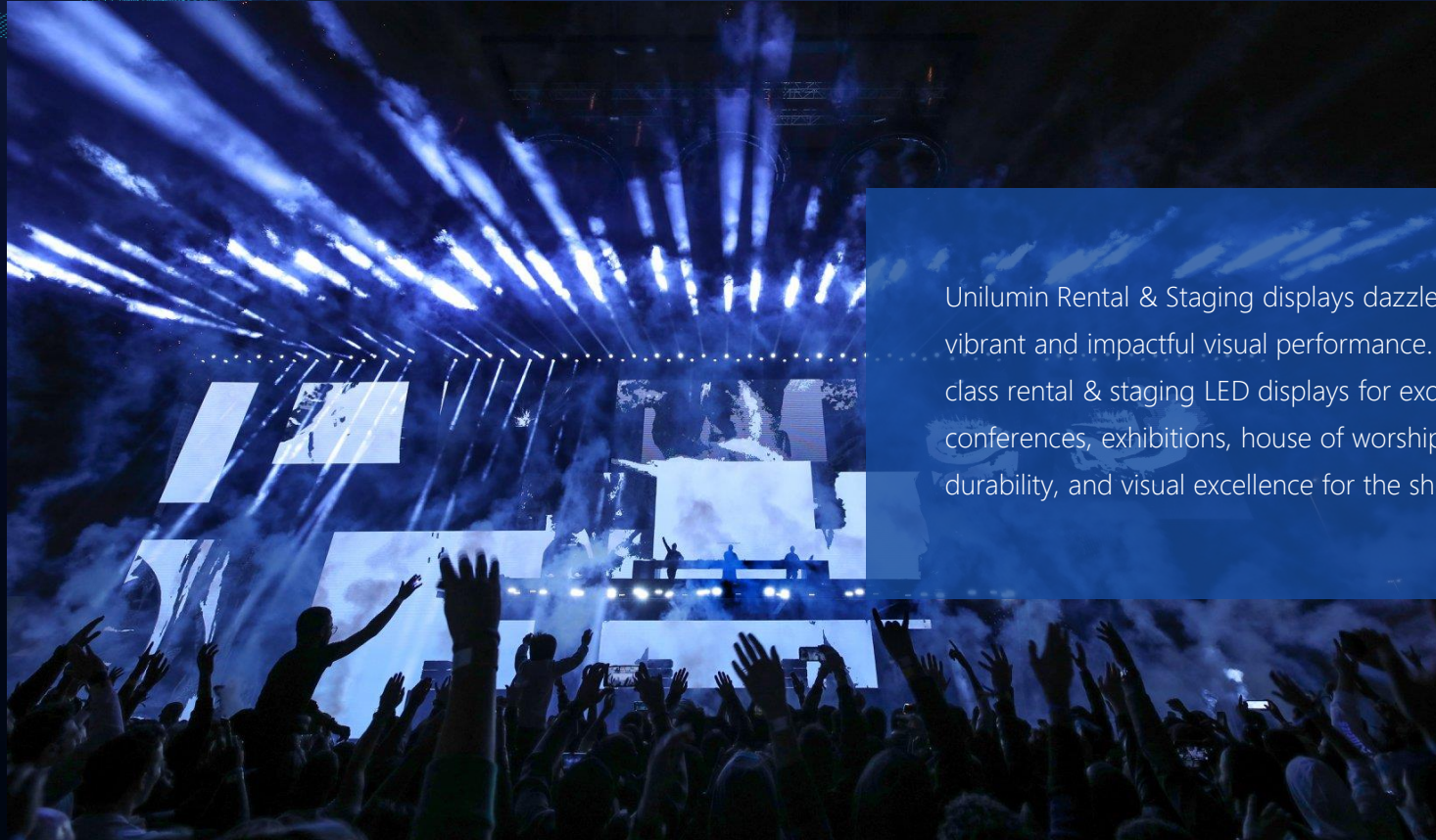
Unit: Million USD



Sources: LEDinside, HCR

## 2-3 Rental and Staging Display Solutions

**Unilumin**



Unilumin Rental & Staging displays dazzle your audience with a vibrant and impactful visual performance. Unilumin provides best-in-class rental & staging LED displays for exquisite live events, conferences, exhibitions, house of worship, offer ease-of-use, durability, and visual excellence for the shows.



### UtileIII3.9, 200sqm, X Factor: Celebrity 2019

British celebrity special edition of The X Factor relied on 200 square meters of Unilumin's UtileIII3.9 LED to deliver an ultimate staging effect for the audience and millions of TV viewers.



## 2-3 Rental and Staging Display Solutions

**Unilumin**



Adlib-Rewind



Cream Fields



Christ Place Church



Indonesia Automobile Exhibition



ADIPEC 2019

## 2-3 Rental and Staging Display Solutions

**Unilumin**



Microsoft Surface Pro TV Commercial



Virtual Studio in Belgium



Painting With Light Virtual Event Studio



DIGITALK, Economdia, SEC



Huawei P20 Launch Conference in Paris



UNESCO Conferenc

The sports venues and events solutions market will experience **explosive growth**, and it is expected to achieve a **CAGR of 25.7%** in the next 4 years

### Sports Venues and Events Solutions Market Volume

Unit: Million USD



Sources: LEDinside, HCR



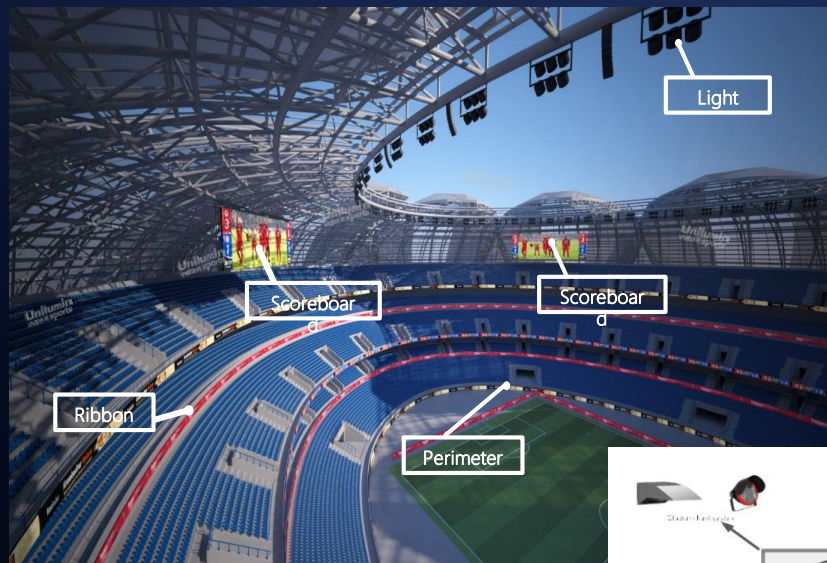
## 2-4 Sports Venues and Events Solutions

**Unilumin**

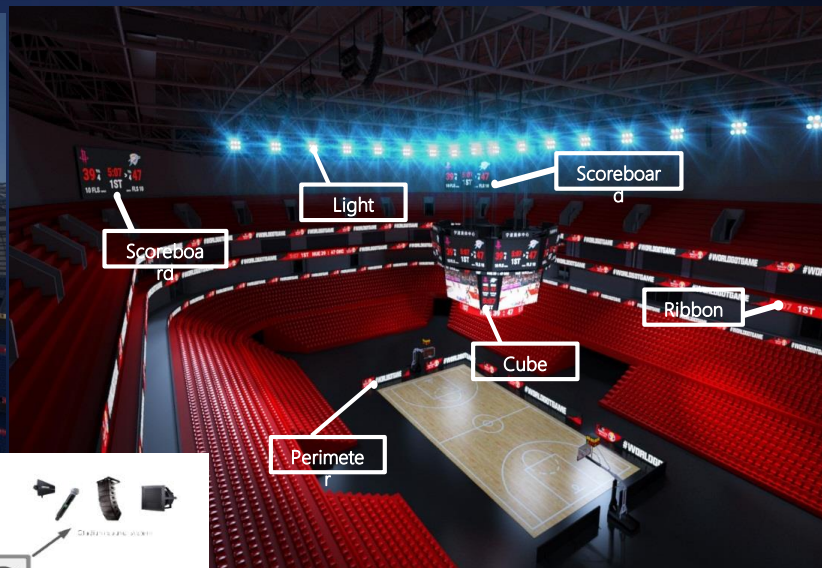


Unilumin Sports is committed to providing first-class professional LED solutions for international events in areas such as baseball, cricket, ice hockey, basketball, equestrian, rugby, racing, swimming, and e-sports. Unilumin Sports is the partner and official supplier of the FIBA International Basketball Federation. Unilumin Sports provides customized management solutions for sports venues and events, which have innovatively integrated audiovisual systems, lighting systems, and control systems. Unilumin Sports solutions have been applied for International events such as the Russia World Cup, Basketball World Cup, Kazan Universiade, and Sochi Winter Olympic.

Outdoor



Indoor



Integrated Control System of  
Display, Lighting and Sound



### Official Supplier of FIBA



### Co-development

Unilumin and FIBA jointly develop new products, and establish an international standard for LED displays at basketball court

### Co-Branding

Establish a joint brand—  
Unilumin & FIBA  
Co-promotion of Unilumin Sports solution

### Exclusive Brand

Unilumin Sports is the exclusive brand of FIBA, the major FIBA events specify the use of Unilumin Sports Solution



## 2-4 Sports Venues and Events Solutions

**Unilumin**



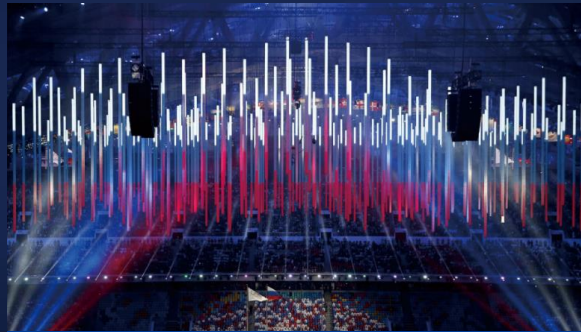
The 7th World Military Games



FIBA Super Cup



Schackel Stadium Project in Germany



Sochi Winter Olympics



Rio Olympics



WTA Year-end Finals



Australian Tennis Match

## 2-4 Sports Venues and Events Solutions

**Unilumin**



Dota2 (TI8)



RNG



PUBG International Tour



Seattle LOL Finals

## 2-5 Smart Conference Display Solutions

**Unilumin**

The smart conference display solutions market will be the fastest-growing market segment, and the market size in 2024 will be 3 times the current size

### Smart Conference Display Solutions Market Volume

Unit: Million USD



Sources: LEDinside, HCR



## 2-5 Smart Conference Display Solutions

**Unilumin**

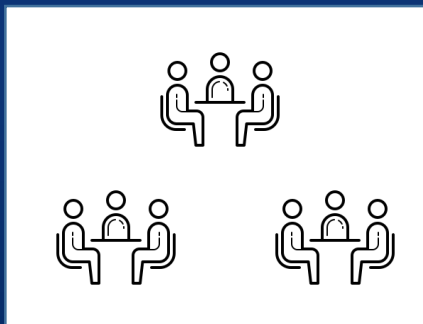


Unilumin's Smart Conference Display Series includes all-in-one LED conference display and touchable handwriting 55" to 98" LCD conference display. Through integrating conference control systems and security systems, Unilumin Smart Conference Display Series can tailor-make LED plus LCD solutions for all sizes of meetings.

### Small Room - UA



### Medium Room - UTVIII

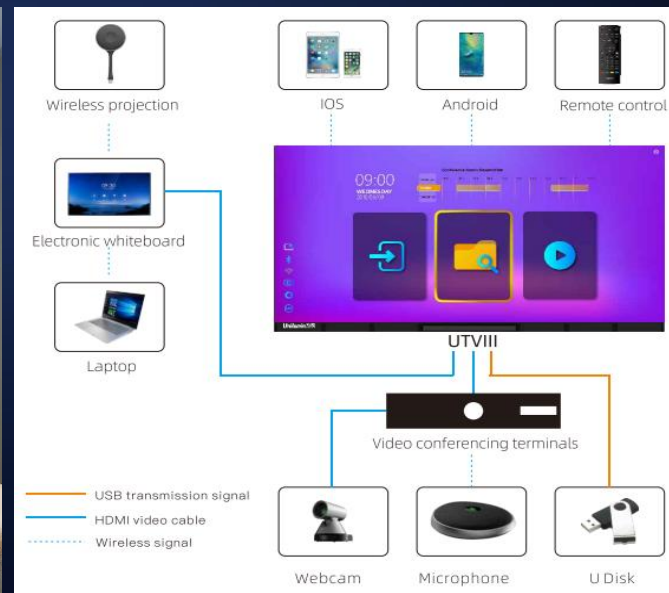


### Large Room – UTVIII + UA



## 2-5 Smart Conference Display Solutions

**Unilumin**



## Smart Conference



## UTVIII1.9, Hubei Province Center for Disease Control

Hubei Province Center for Disease Control and Prevention is a Chinese provincial hub for managing disease control and prevention. The center employs UTVIII as a display medium to present key message to stakeholders and provide visualized information for decision makers to respond to all kinds of demands from situation awareness to emergency alert to analysis report.



## 2-5 Smart Conference Display Solutions

**Unilumin**



Maverickin Meeting Room, UK



Home theater Indonesia



Shanghai Aerospace Research Institute, China



The demand for landscape lighting solutions in public squares, parks, CBD, tourist attractions and “night economy” is in a period of rapid growth, the market size in 2025 will reach 28.5 billion USD

### Media Architecture and Landscape Lighting Solutions Market Volume

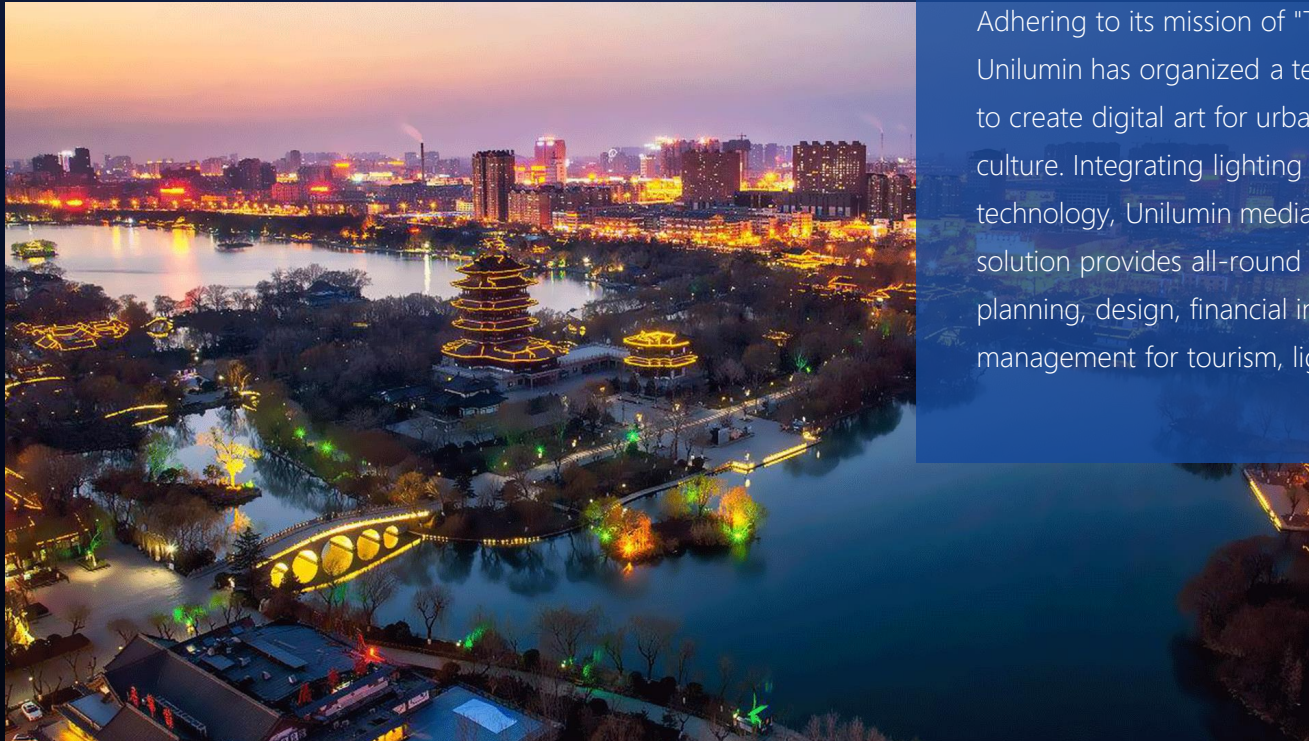


Sources: Tianfeng securities, GGI

## 2-6 Media Architecture and Landscape Lighting Solutions

**Unilumin**

Integrated overall solution of audio, visual and lighting



Adhering to its mission of "Together, for a brighter future", Unilumin has organized a team with rich professional experience to create digital art for urban cities combining technology and culture. Integrating lighting with sound and AR/VR display technology, Unilumin media architecture and landscape lighting solution provides all-round one-stop solutions of consulting, planning, design, financial investment, construction, and management for tourism, light show, night-time economy.

## 2-6 Media Architecture and Landscape Lighting Solutions

**Unilumin**



Shanghai West Bund Media Port

First project in China that designs lighting  
for five surfaces of buildings

Commercial Business

Entertainment

Media

Communications



### The 70th Anniversary of the Navy-Qingdao Port Lighting Project

In this project, Unilumin successfully lit up Qingdao Port to celebrate the 70th anniversary of the founding of the People's Navy.



### Enshi Qingjiang River Basin Lighting Project

The extraordinary monomer EPC lighting project covers entire Qingjiang River Basin lighting. This project valued more than 500 million yuan(US 755,549 dollars)

## 2-6 Media Architecture and Landscape Lighting Solutions

**Unilumin**



Qingdao Shanghai Cooperation Summit  
Lighting Project



West Lake Scenic Spot Lighting Project of  
Hangzhou G20 Summit



Shanghai Tower Lighting Project



Qufu Confucius Museum Lighting Project



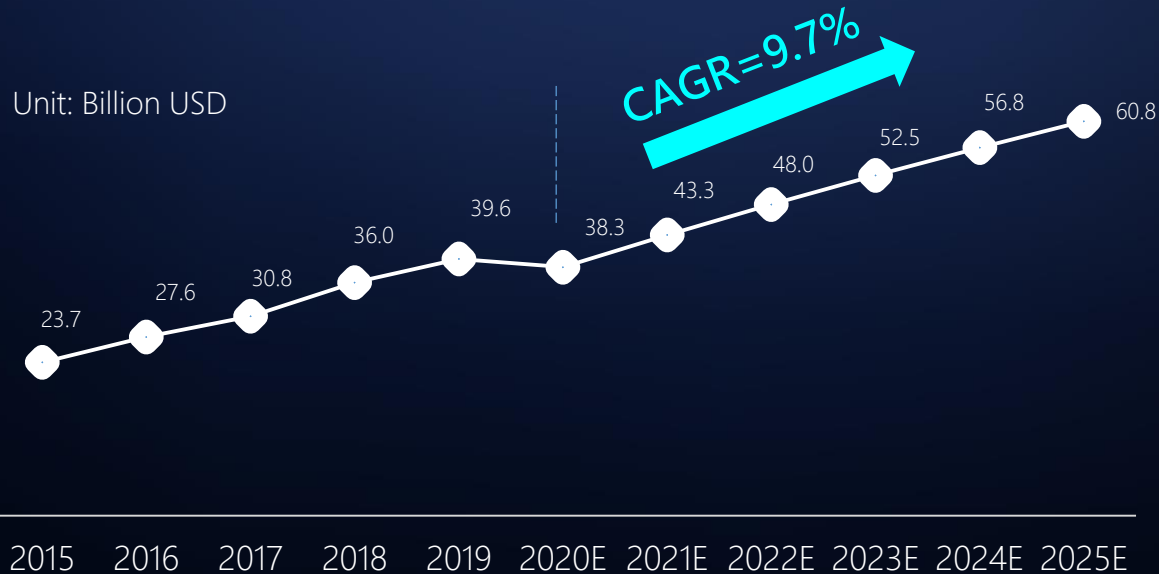
Olympic Sports Center Lighting Project



Waterscape Light Show in Changchun

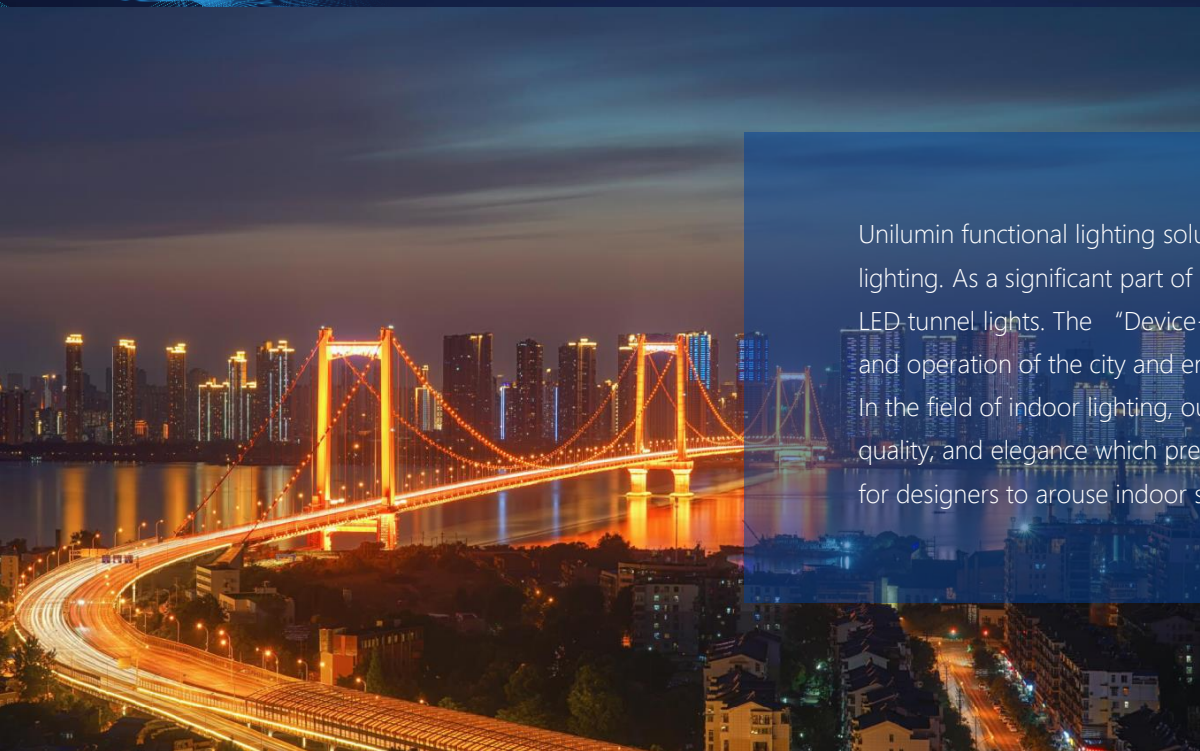
In the future, the penetration rate of LED lighting solutions will continue to grow. The market size in 2025 will be approximately 20 billion USD more than today

### Functional Lighting Solutions Market Volume



Sources: Tianfeng securities, GGI





Unilumin functional lighting solutions cover both outdoor public street lighting, and indoor lighting. As a significant part of city infrastructure, Unilumin provides LED street lights and LED tunnel lights. The “Device+Cloud+5G” solution realizes the intelligent management and operation of the city and ensures a safe and sustainable life of the city.

In the field of indoor lighting, our product designs are focused on originality, creativity, quality, and elegance which present texture and color, flexibly providing more possibilities for designers to arouse indoor space spirit and ethos.



Brazil Landscape Lighting Renovation Project

### The world's largest LED street lamp replacement project

Requirements:

- One-stop solution
- Highly energy-efficient products

A total number of 350,000-400,000 Unilumin NANO series LED street lights were applied for this project.



- New Infrastructure - 5G Construction
- Operation Center Display + Intelligent Lamp Pole
- Intelligent City Solution Opportunities

## LED Display+5G+ Intelligent Lamp Pole

Intelligent City “Device+Cloud+5G” Solution



## 2-7 Functional Lighting Solutions

**Unilumin**



+  
5  
G



Shenzhen Dapeng New District Management Service  
Command Center



Austria Landscape Lighting Renovation  
Project



Israel Landscape Lighting Project



+  
5  
G



Shenzhen Qianhai Free Trade Zone Intelligent City



Czech Landscape Lighting Project



Germany Landscape Lighting Project

### Masfield Headquarters Building Project



Unilumin indoor lighting and DASUN team was responsible for the design and implementation of the Marisfrog headquarters building which is an architectural masterpiece. The team aiming to highlight the architectural space characteristics by highlighting the light but not the luminaires, the design concept of "seeing light but not the lamps".



## 2-7 Functional Lighting Solutions

**Unilumin**



Hangzhou Diaoyutai Mgm Hotel



Xiamen Curio Collection by Hilton



Shanghai Bellagio Hotel



Nanjing Ritz-Carlton



VIP Lounge at Shanghai  
Pudong Airport



Shanxi Wanda Plaza



Tianjin Starbucks  
Reserve



Shanghai Baili Cabinet



Vanke Tiandi Art Museum



Chengdu  
Sino-Ocean Taikoo Li



PART

03

# Customer Value

Unilumin has a complete product portfolio of LED display and lighting, covering a wide range of indoor and outdoor applications. The winning combination of various product lines equips our partners with huge capabilities to meet all kinds of market demands and gets them prepared for emerging opportunities.

### Unilumin "2+7" Business Segments



## 3-2 Award-winning Products

**Unilumin**

With the product quality certifications and product awards that Unilumin has received globally in over 16 years, Unilumin's LED display and lighting products inspire our partners with successful innovations and enable our partners to grow with confidence.





### 3-3 Trusted Partner of International Brands and Organizations

**Unilumin**

As an LED partner of many international brands and organizations, Unilumin is always committed to serving its partners and customers with the most reliable LED products and professional services.

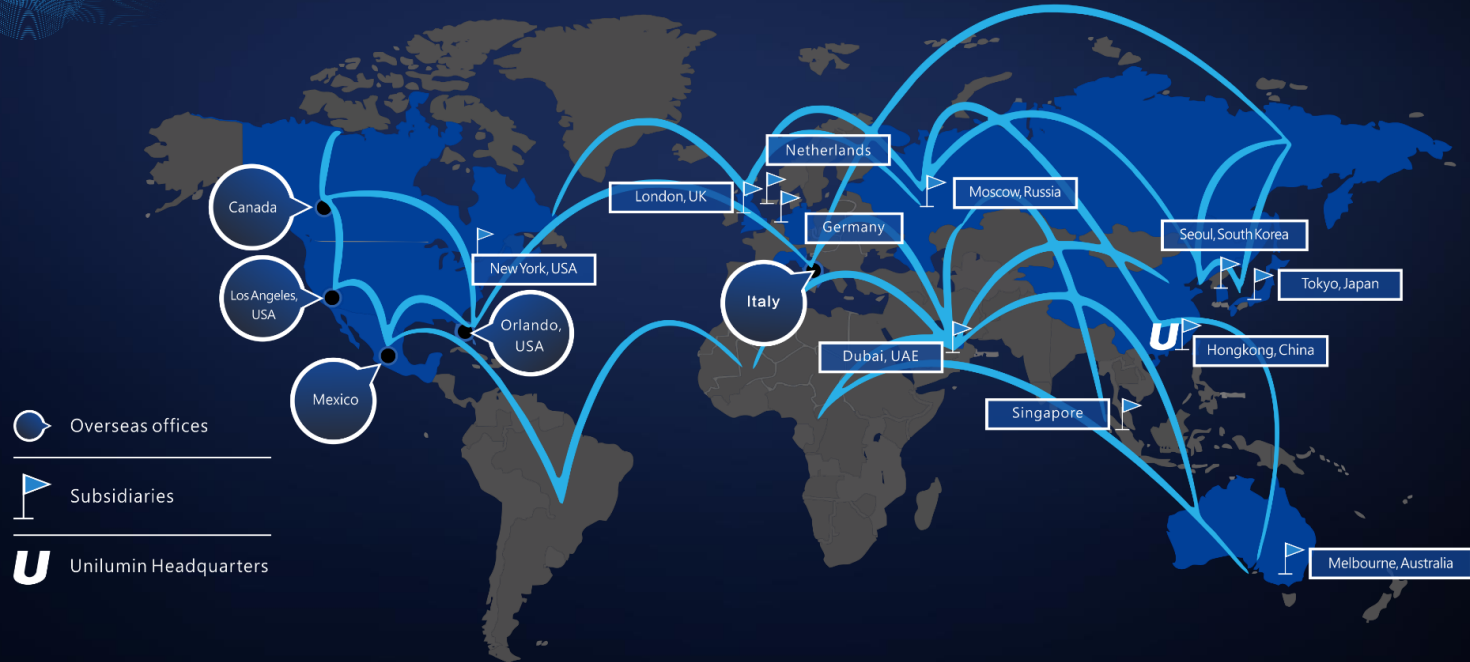
"We are delighted to have secured a long-term partnership with an industry leader in Unilumin and are looking forward to unlocking new possibilities within the framework of our cooperation."

*Andreas Zagklis, FIBA Secretary General*



### 3-4 Global Service Networks

**Unilumin**

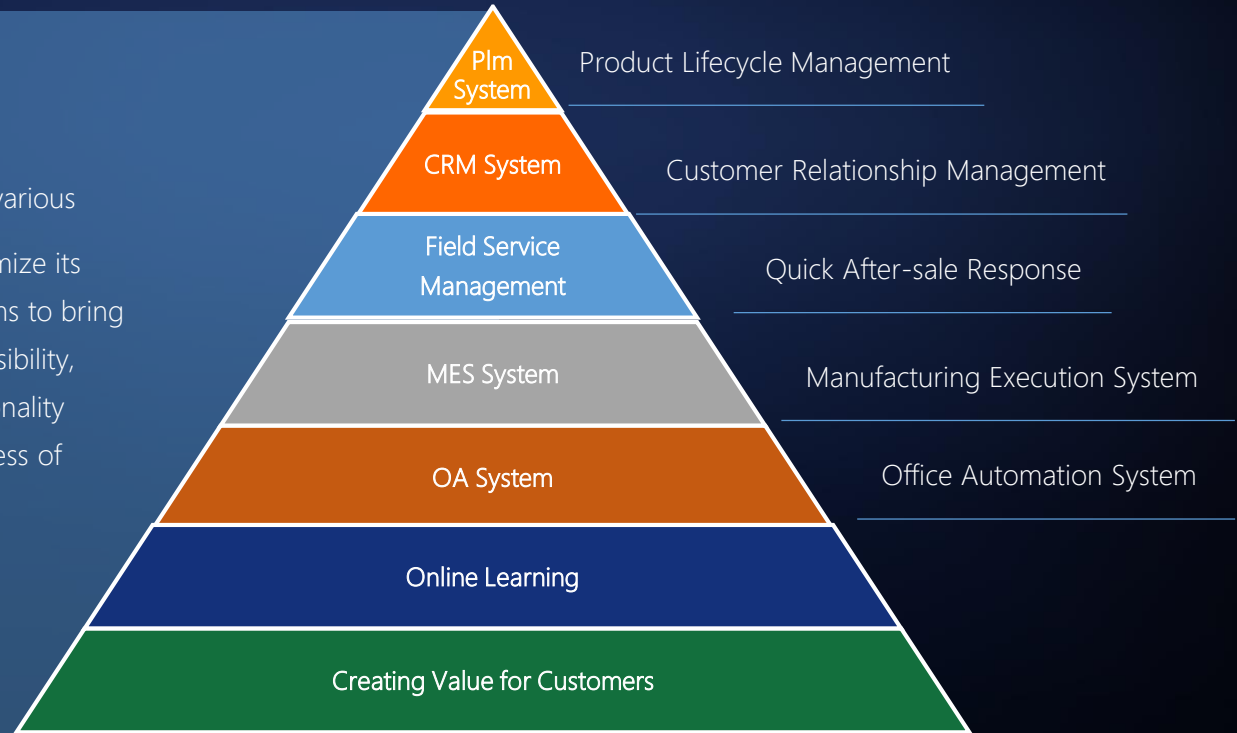


**15** Subsidiaries & Offices

**5,000+** Employees

Service Networks in **100+** Countries

Unilumin leverages various efficiency tools to optimize its internal working systems to bring customers with responsibility, reliability and professionalism during the whole process of collaboration.





Unilumin provides one-stop service from procurement to project installation to technical support, offering its partners with all-in-one services with high efficiency for the lowest possible costs.

### Pre-sales

Professional Drawing Design  
2d / 3d Visual Effect Simulation  
Field Survey



### After-sales

24-hour Response Service  
On Site/Factory Repair



### Projects

Engineering Construction  
Installation and Debugging  
User Training



## 3-7 Empower Partners with Innovation and Expertise

**Unilumin**



### Central Laboratory

Providing reliable products from accurate tests and tight quality control conducted at Unilumin central laboratory that is authorized by CNAS and that is affiliated with SGS, TUV-SUD, TÜV Rheinland, and UL-WTDP.

### 2,132 Patents Home & abroad

Driving every partnership  
with innovation, expertise  
and technological capability.



### Participated in making 48 Standards

Presenting the most compatible  
solutions and services in the  
industry available for every  
customer.



## 3-8 Industry-leading Manufacturing Capacities

**Unilumin**

**H**aving the largest LED production base (400,000 m<sup>2</sup>) in the world with a yearly production capacity of over 714,000 m<sup>2</sup>, Unilumin is always prepared to fulfill its responsibility of meeting its partners' increasing demands. The application of smart production line and Mini LED manufacturing technology enable Unilumin to provide worldwide customers with full ability to lead the LED industry.



**400,000 m<sup>2</sup>**  
Industrial Park



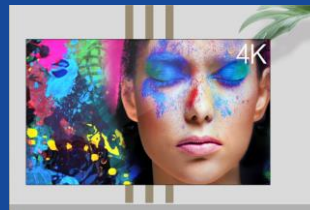
Quality Control  
CE, UL, FCC, RoHS certification



**714,000+ m<sup>2</sup>**  
Production Capacity per Year



Intelligent  
Manufacturing



**Mini LED (0.5-0.9mm)**  
Technology



# THANKS



Official Website



Unilumin Headquarters  
VR Tour



Unilumin R&D Base  
VR Tour



Unilumin Smart Factory  
VR Tour